



Whats New? - JobControl 9.4.4

1 JobControl Release 9.4.4

1.1 License Keys

A valid license key is mandatory – even if using view “Basic”!

Therefore keep in mind to ask for license keys BEFORE updating existing “Basic” installations to Version 9.4.4. Provide the lasers serial number when requesting the key.

1.2 Lens selection

- Warning if a CO2 lens is tried to be used together with a fiber process.
- Additional lens offset just used when flexx lens is selected.

1.3 MCI

- Reduced distance level with improved ink positions.
- Warning “5032” when an anti-aliasing correction occurred.

1.4 Other modifications

- Zoom with mouse wheel.
- Improved pixel correction.
- Better performance with large vector jobs.
- Vector ordering can sort black vectors now.
- Job time calculator – ignores empty lines from within HQ jobs.





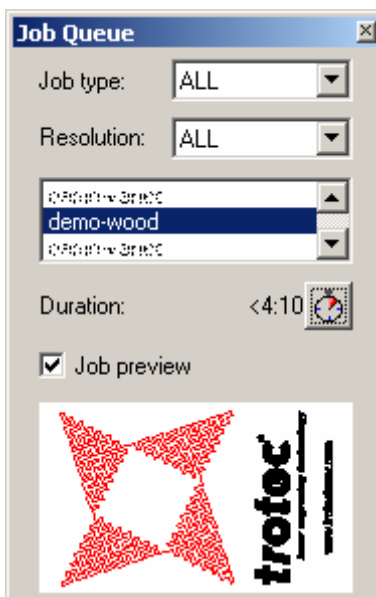
What else was new?

2 JobControl Release 9.4.2

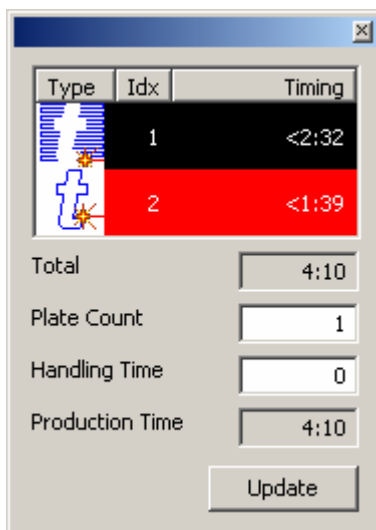
2.1 Job Time Calculator

This forecasting tool was included for higher productivity and improved production scheduling. It is available with expert view only.

Stepping through the jobs within the job queue is showing a swift, but rather coarse, estimation of job duration.



A click on the stop watch button gives a more detailed estimation and information about used colors and kind of process.



After actuating the update button, process time is shown with high accuracy.

Type	Idx	Timing
	1	1:28
	2	1:33
Total		3:00
Plate Count		1
Handling Time		0
Production Time		3:00
Update		

By filling out Plate Count (number of copies) and Handling Time (time to un- and reload material), process time for batch production can be calculated.

Calculation of complete working area (multiple positioned jobs) is possible as well. Just mark the desired jobs and click update.

After changing speed or other time impacting settings (e.g. acceleration, high quality engraving), a recalculation is necessary. Shown by an asterisk.

Type	Idx	Timing
	1	1:28*
	2	1:33

2.2 Multi Color Jet compatibility

With the [Multi Color Jet](#), Trotec and Trodat have further optimized the Multi Color stamp production process. While the Trotec laser engraves the stamp text plate, the Multi Color Jet inks the ink cartridge (stamp pad), previously cut using the laser.

An update to JobControl 9.4.2 is required in order to achieve compatibility to the Multi Color Jet.

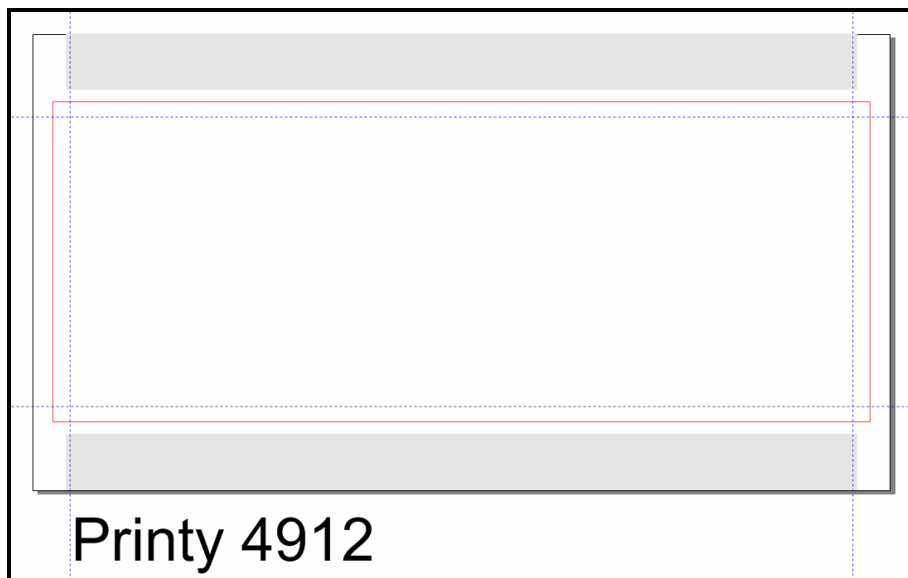


2.3 New Trodat MCI products supported

Trodat has introduced new [ink cartridges](#) for Printy 4911, 4912 and 4913.

The new cartridges come with the characteristic grips and will be replacing the existing cartridge sizes 4911, 4912 and 4913 from September 2010.

Newly designed MCI Templates (CorelDraw®) are available therefore.

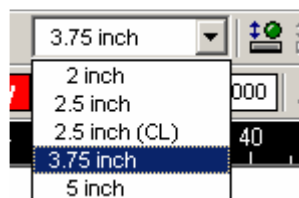


The new MCI Templates in combination with JobControl 9.4.2 will enhance ink cartridge cutting once more.

Remember to update **MCI-Check** to version 9.4.2 too.

2.4 Speedy 500 rotary lens added

3.75 inch lens was added to Speedy 500 machines, particularly with regard to rotary engraving tasks.



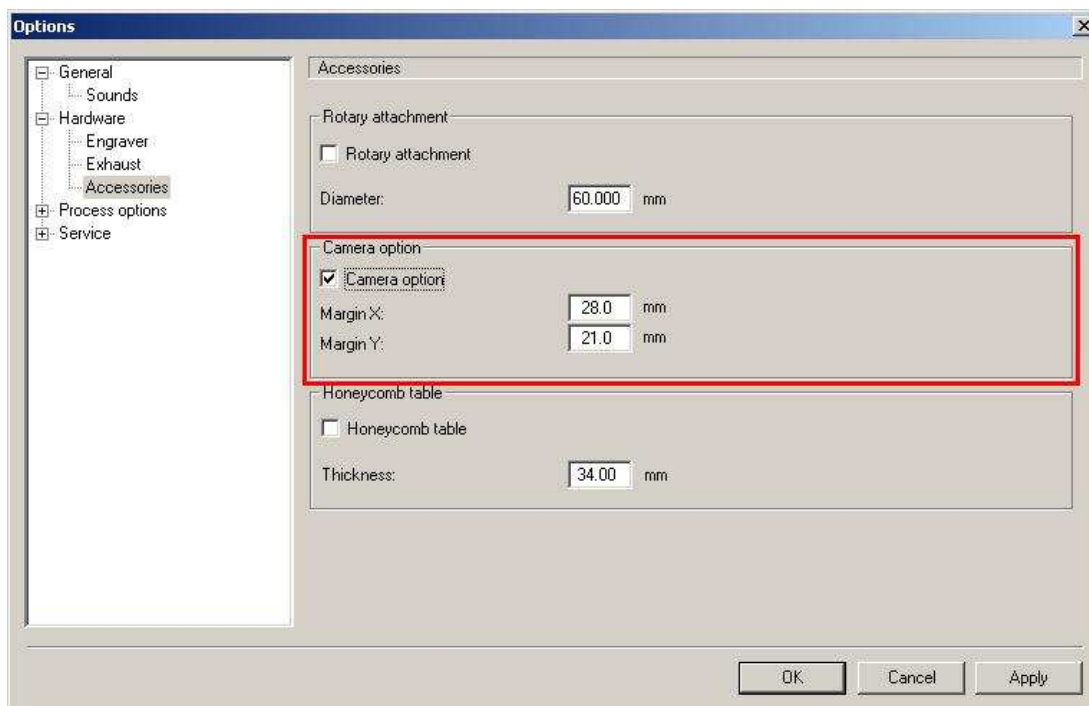
Speedy 500 lens selection



What else was new?

3 JobControl Release 9.4.1

3.1 Camera Option



Check “Camera option” when an i-cut camera is mounted to the laser system.
Working space is reduced by the entered margin values.





3.2 New engraver models

- ▶ **Speedy 100 platform** For all engraving and cutting tasks
Working area 610 x 305 mm
For all popular standard material sizes
Available with CO2 and fiber laser.

- ▶ **Speedy 300 platform** Speedy 300 laser engraver stands
for productivity, economic efficiency
and precision.
Available with CO2 laser, fiber laser
or both.

- ▶ **Speedy 300 flexx** One laser system,
endless application possibilities.
CO2 and fiber laser integrated
into a Speedy.





What else was new?

4 JobControl Release 9.4.0

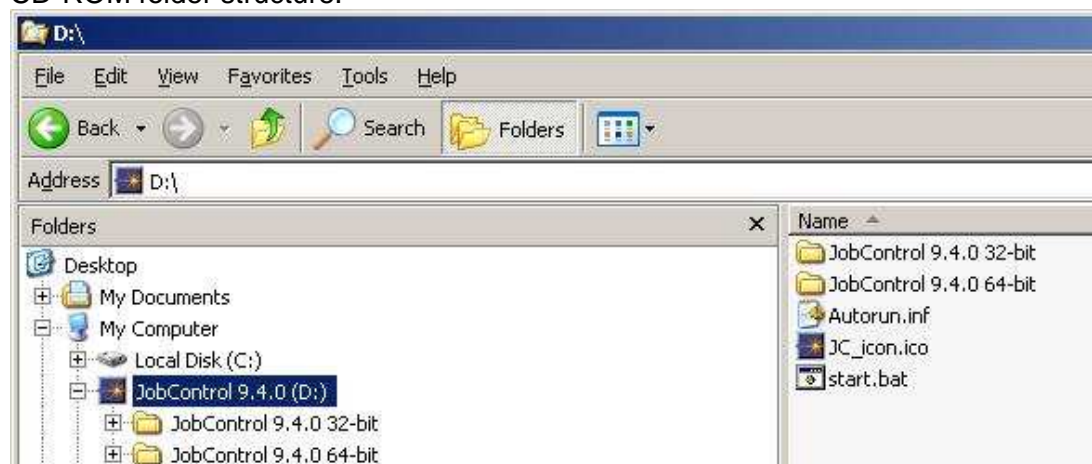


4.1 Microsoft Windows® 64-bit compatibility

JobControl 9.4.0 is capable to work with both the 32 and 64 bit version of **Windows XP, Vista** or **7**. (Windows 2000 is not supported anymore.)

Due to technical reasons different installations are required for 32 and 64 bit. Both versions are available on one single CD-ROM.

CD-ROM folder structure:



Installer is automatically looking for installed os, starting either the 32 or 64 bit installation, if autoplay is enabled on the computer. If it does not, run the file “start.bat” or the setup.exe from within the adequate sub-directory.

Additionally the USB drivers are installed during JobControl installation. So there is no need for manual installation anymore.



New PC requirements:

The following recommendation represents the **minimum requirements**.

When using a more powerful computer the graphics are generated and displayed faster and the computing times and the data transfer to the laser are reduced.

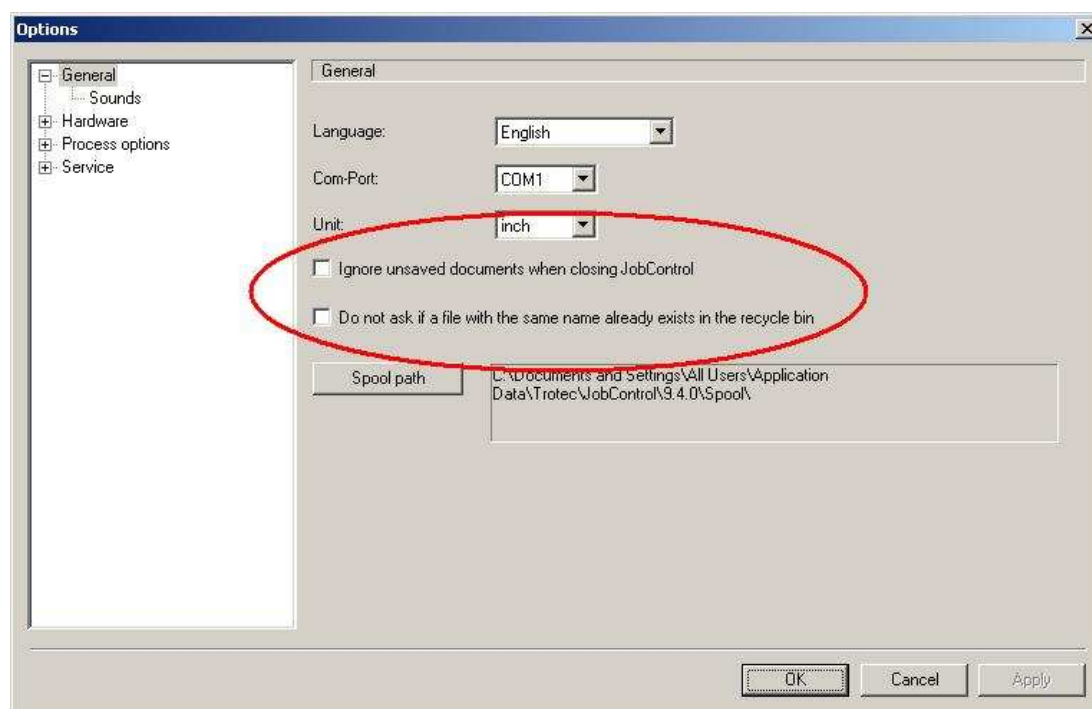
- Windows 7® 32/64-bit or
Windows Vista® 32/64-bit (with Service Pack 1 or later) or
Windows® XP 32/64-bit (with Service Pack 2 or later)
- 512 MB of RAM, 400 MB of hard disk space
- Pentium® 1 GHz processor or AMD Athlon™ XP
- 1024 x 768 or better monitor resolution
- 24-bit color depth graphics card
- 1 free USB interface
- CD drive
- Mouse

4.2 User registration

It is Trotec's clear target to support our customers best – take advantage of first hand information by using the new user registration function.



4.3 New plate and recycle bin options



4.4 Error description is being displayed together with laser error codes





What else was new?

5 JobControl Release 9.3.4

Fixed issues

- MCI functionality was not working with 9.3.3
- Cut color issue resolved. Color #9 and #16 accidentally became processed combined.



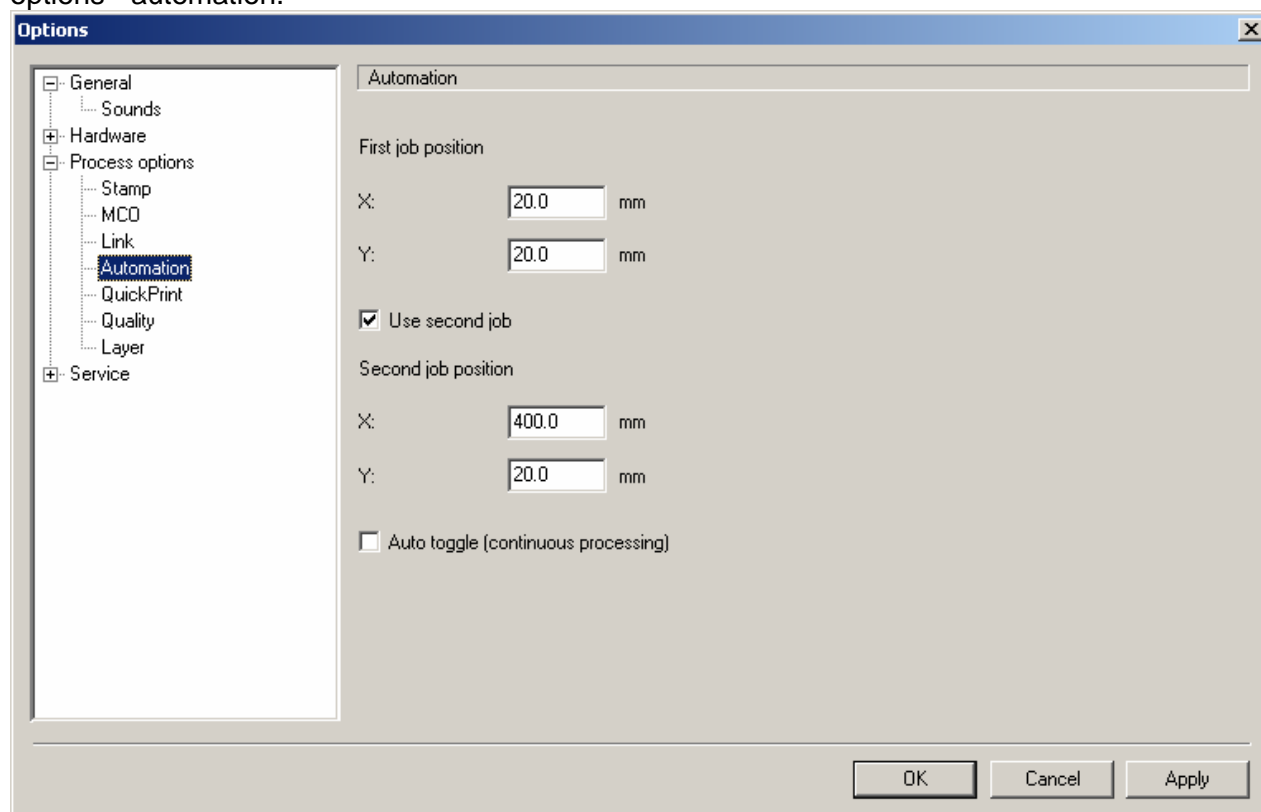


What else was new?

6 JobControl Release 9.3.3

6.1 Job automation

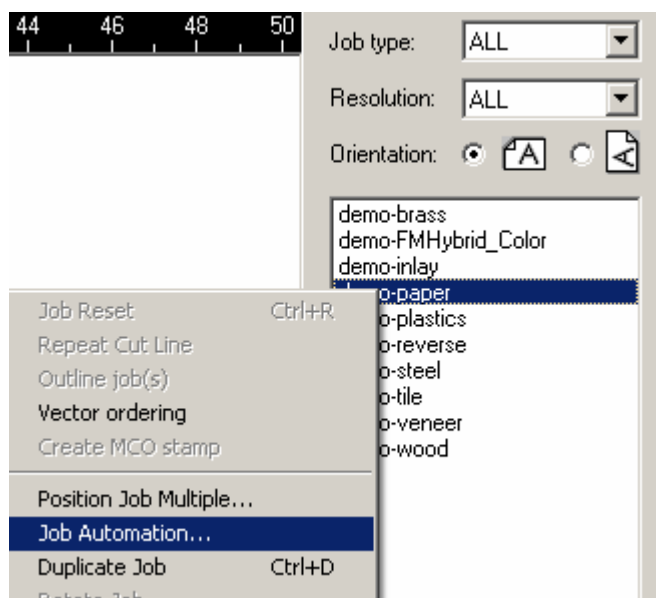
Enter the wanted Job position, and if wanted the position for a second job, within options – process options - automation.



Auto toggle will activate the continuous mode, which is repeating both job positions alternately in a continuous manner, if checked.



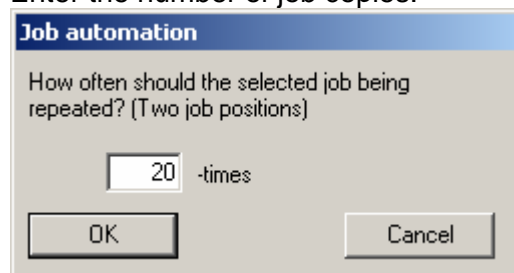
Start automation by right clicking a job from the queue and choose job automation,



or use the automation button from the toolbar.



Enter the number of job copies.



After actuating the start button the laser will process one or two jobs (whether use second job position was activated or not).
By actuating the start or repeat button this may be repeated until the entered number if job copies is reached.





What else was new?

7 JobControl Release 9.3.0

7.1 MCO with reduced distance/area

Usually MCO designs need 2.5 millimeter distance from a colour to another. The new version allows 1.5 millimeter.

Also the smallest possible colour area has changed from 8 by 8 millimeter to 6 by 6 millimeter.

Still 2.5 mm distance and 8 by 8 mm area are the approved, default settings. Usage of the new, reduced, distance and area limitations occur always at the users own risk!

A special MCO license key is required to work with the new values. Contact Trotec Technical Support to order such a license key.

Take care to have your lasers serial number ready when ordering the license key.

Software Registration

Contact your trotec dealer to apply for registration and enter the received key below.

S.N.: S3-9999

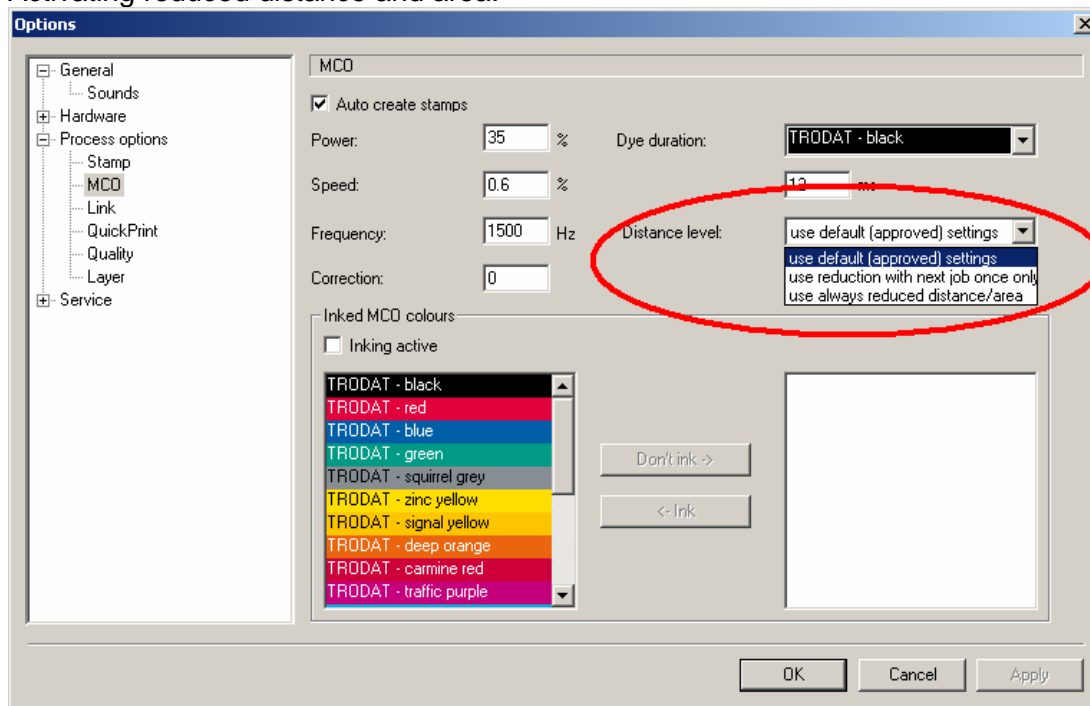
Four empty input boxes for registration details and an "Add key" button.

Key	Feature	Level	valid thru
0009999PE9770038	Multi Colour Option	full (distance reduction)	unlimited
0009999K2596A119	Multi Colour Option	full	unlimited
0009999DKP7UCD6D	Master Key	full access	unlimited
-	Vector ordering	-	-

Close



Activating reduced distance and area:



Within process options - MCO the following options are available:

- use default (approved) settings
- use reduction with next job once only
- use always reduced distance/area

The chosen option has an effect on the MCI-Check as well.

MCI-Check version 9.3.x is required to work with JobControl 9.3.0 !

Note that working with reduced distance/area may result in 'missing dye point' or 'cannot ink colour area completely' warnings in some cases.



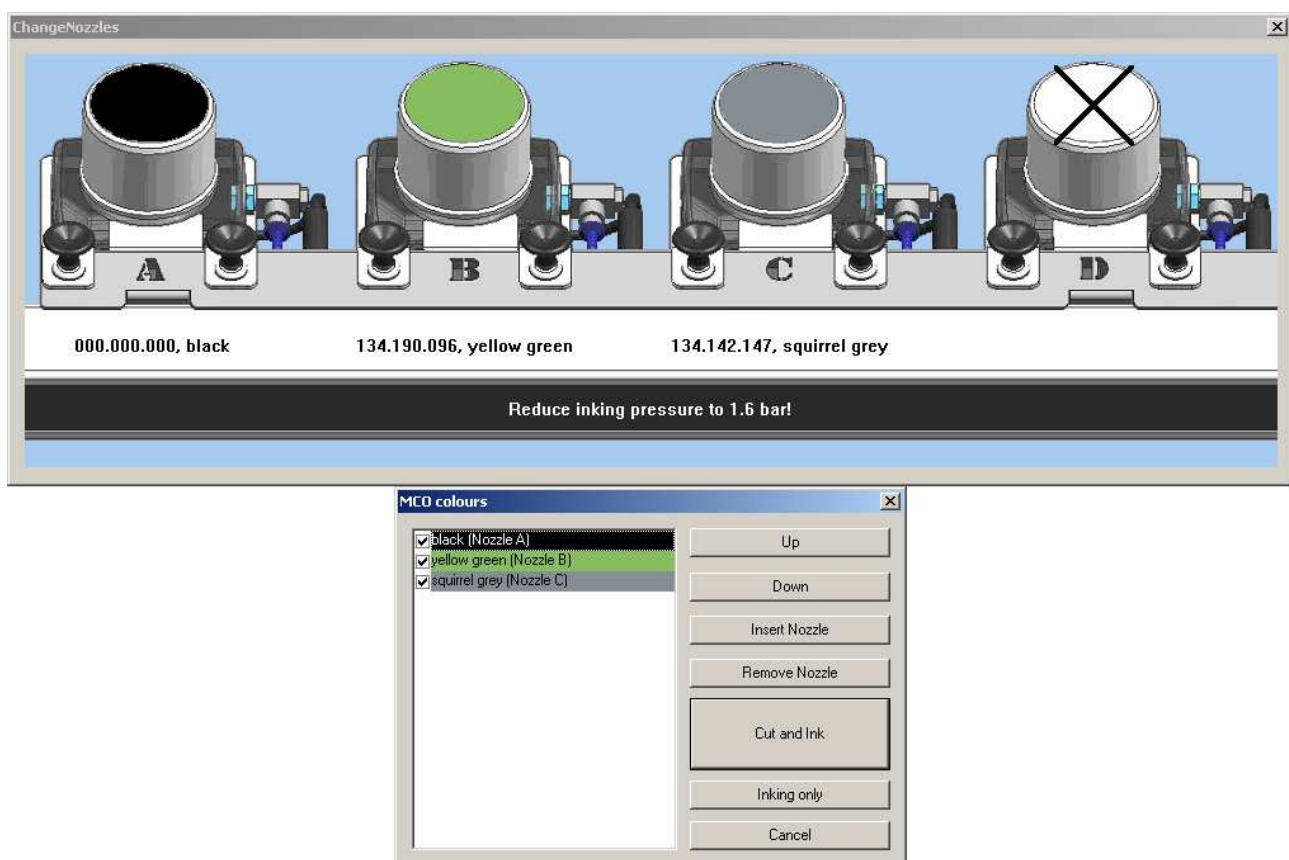
What else was new?

8 JobControl Release 9.2.1

8.1 MCO2

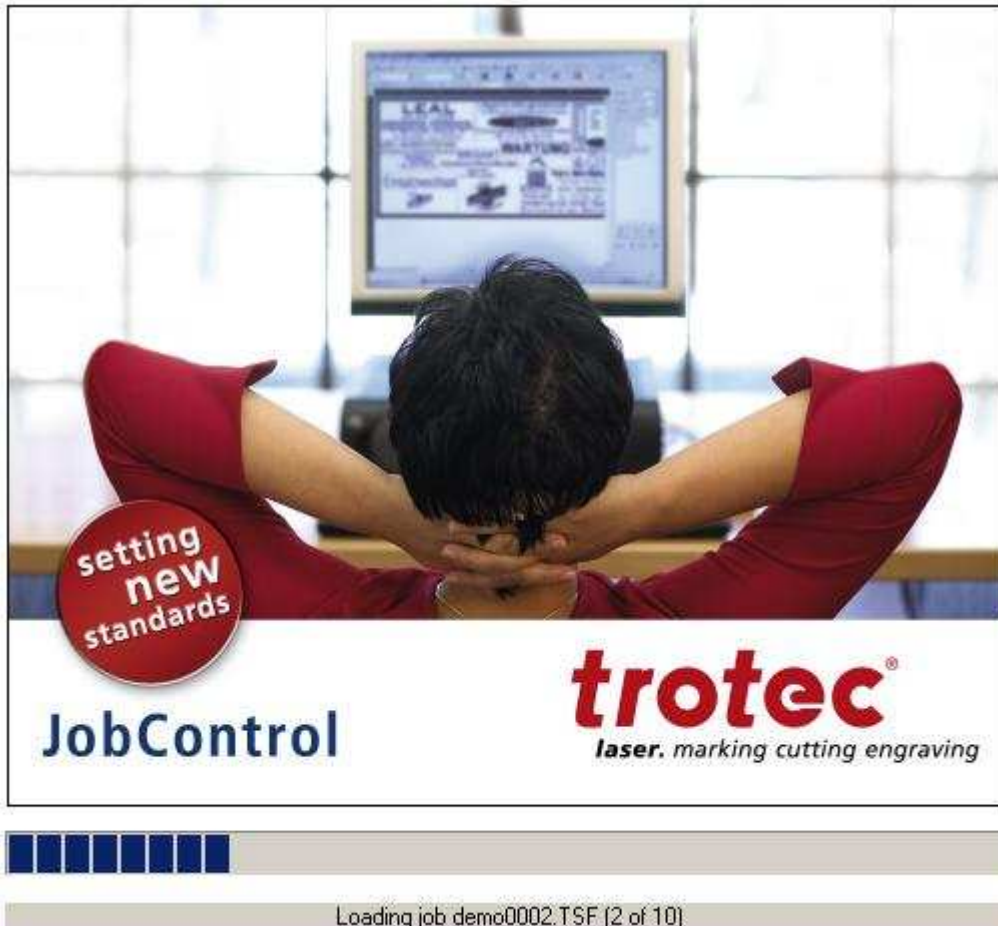
New stamp product Trodat "Mobile Printy" now supported. Mobile Printy pads are automatically rotated on plate to fit the tray. (requires MCI-Ceck 9.2.0)

New visual MCO dialog is showing colour configuration. User can affect nozzle order to his needs.



8.2 Welcome screen

Job loading state added.



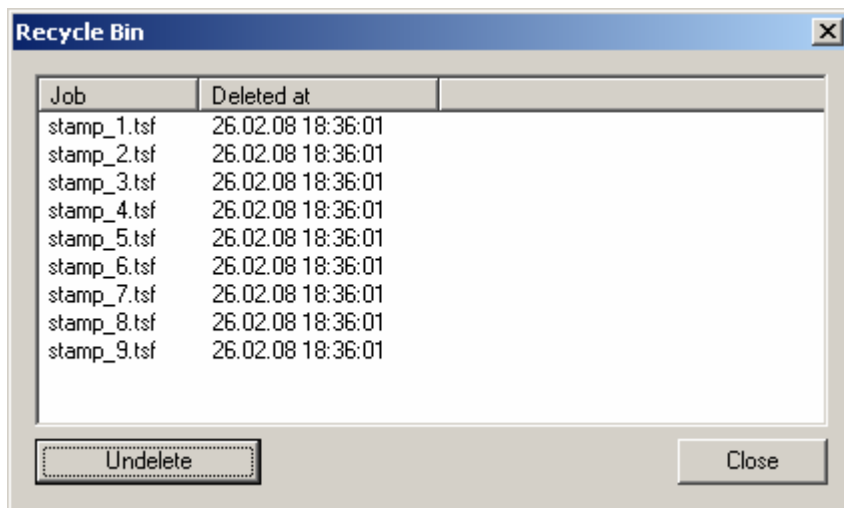
8.3 Marker

Drag markers with mouse.



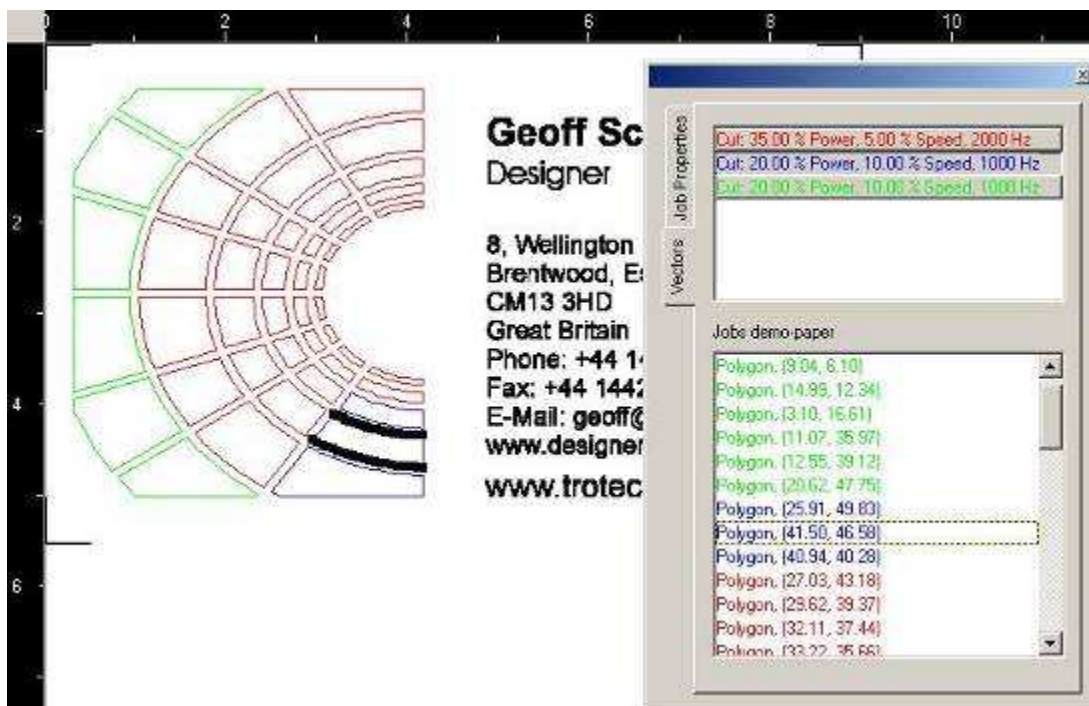
8.4 Recycle Bin

JobControl keeps up to 20 deleted jobs in the recycle bin. (menu View)



8.5 Sidebar

Showing Job and vector properties.



What else was new?

9 JobControl Release 9.1.0

9.1 MCO2



Extended colour palette with **Multi Colour Option 2**

	black 000.000.000		zinc yellow 255.221.000		light blue 000.177.230
	red 226.000.060		signal yellow 253.196.000		sky blue 000.140.208
	blue 000.094.168		deep orange 234.101.013		violet 056.055.140
	green 000.154.133		carmine red 205.000.057		yellow green 134.190.096
	squirrel grey 134.142.147		traffic purple 197.000.123		orange brown 195.100.061

JobControl is supporting now 15 colours standard (plus up to 120 user defined colours) with appropriate lasers and MCO license key.

Compatible printer driver and MCI-Check software are as well available as version 9.1.

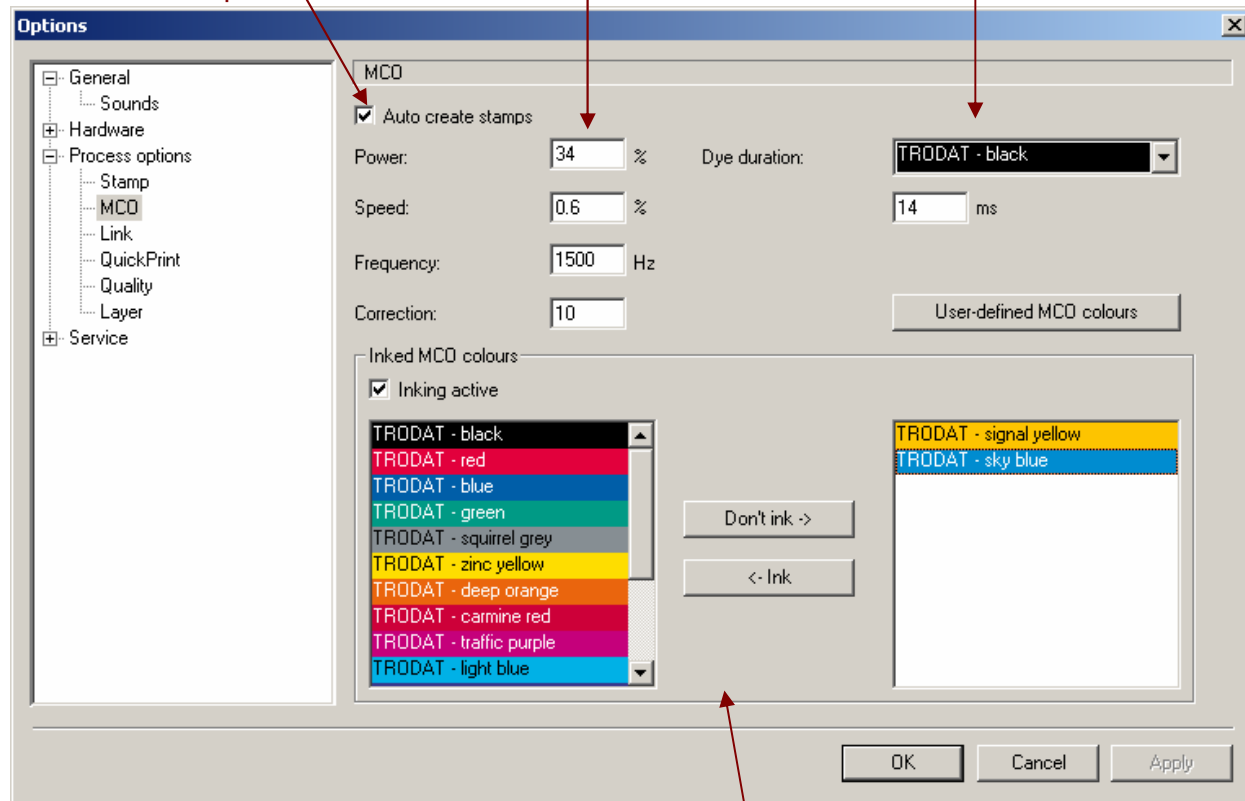


MCO2 Process options menu

if checked stamp job will
be created after MCO job
has arrived into queue

pad cut settings

inject duration separately per
colour - in milliseconds



enable/disable individual or all colours for automated inking

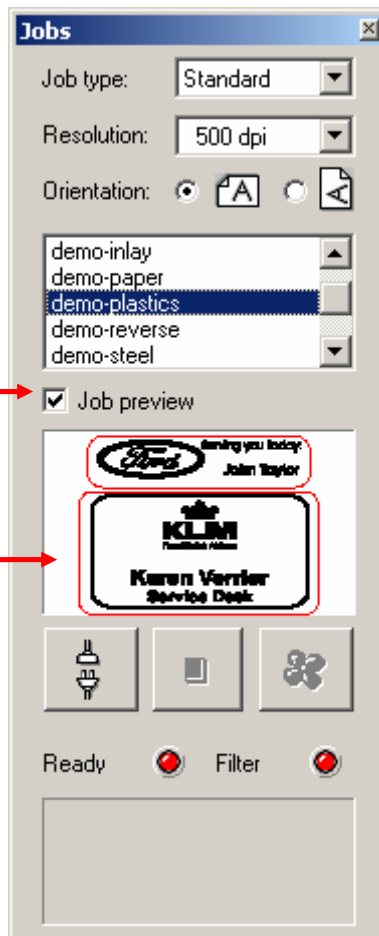


9.2 Job preview

See job content before positioning on plate.

enable/disable preview

preview area



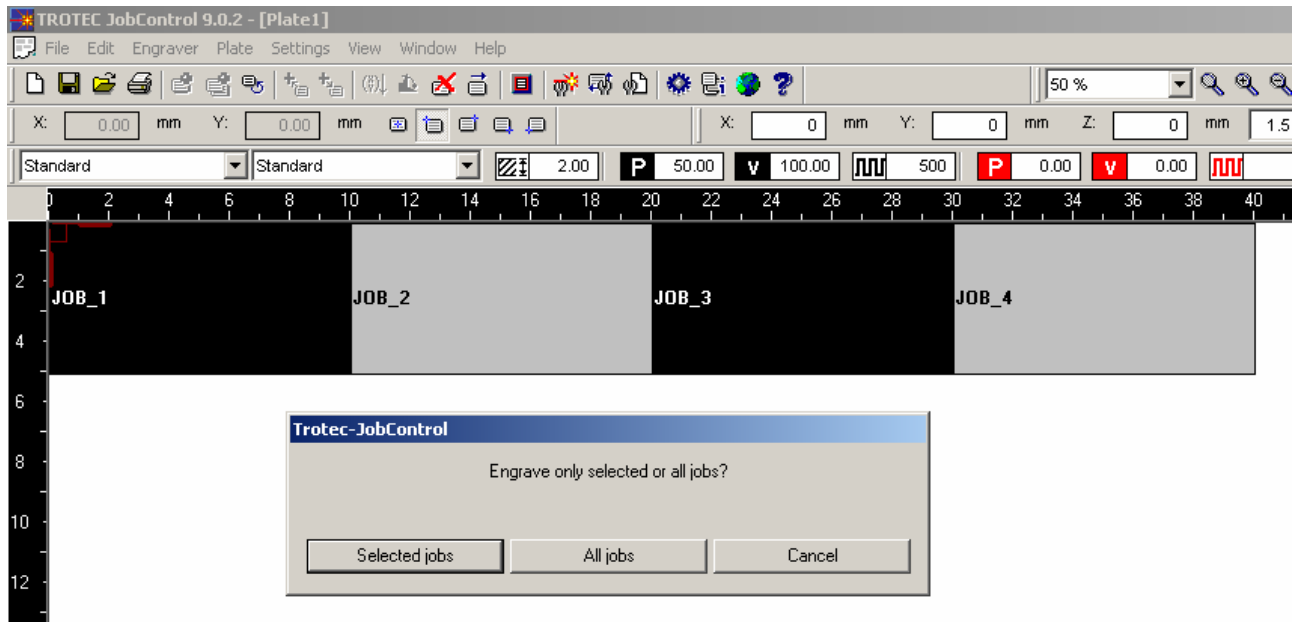
All graphical contents like bitmaps and vectors are shown, regardless of material settings.

The preview displays each single selected job from either queue or plate.



9.3 Process selected jobs only

Dialog whether to engrave all or just selected jobs upon starting.



9.4 Alter vector colours

To change colours of vectors in WYSIWYG view, right click the vector to modify and choose from a list of available vector colours.

Job in WYSIWYG view

1. right click vector to modify

2. choose new colour

modified job

Material settings

	Colour	Power
Engrave	1	38.
Cut	2	25.
Cut	3	16.
Skip	4	
Skip	5	
Cut	6	16.
Skip	7	
Skip	8	
Skip	9	
Skip	10	
Skip	11	
Skip	12	
Skip	13	
Skip	14	

All vector colour modifications are permanently saved to the job file.

Colour modification of auto cuttlines (rectangular, circular, optimized) is not possible.



9.5 Outline function

By using menu Edit or the job context menu, outlining may be started.

The lens carriage begins travelling along the surrounding shape of all selected jobs.

The laser is switched off, while the red laser pointer is indicating position of job content.

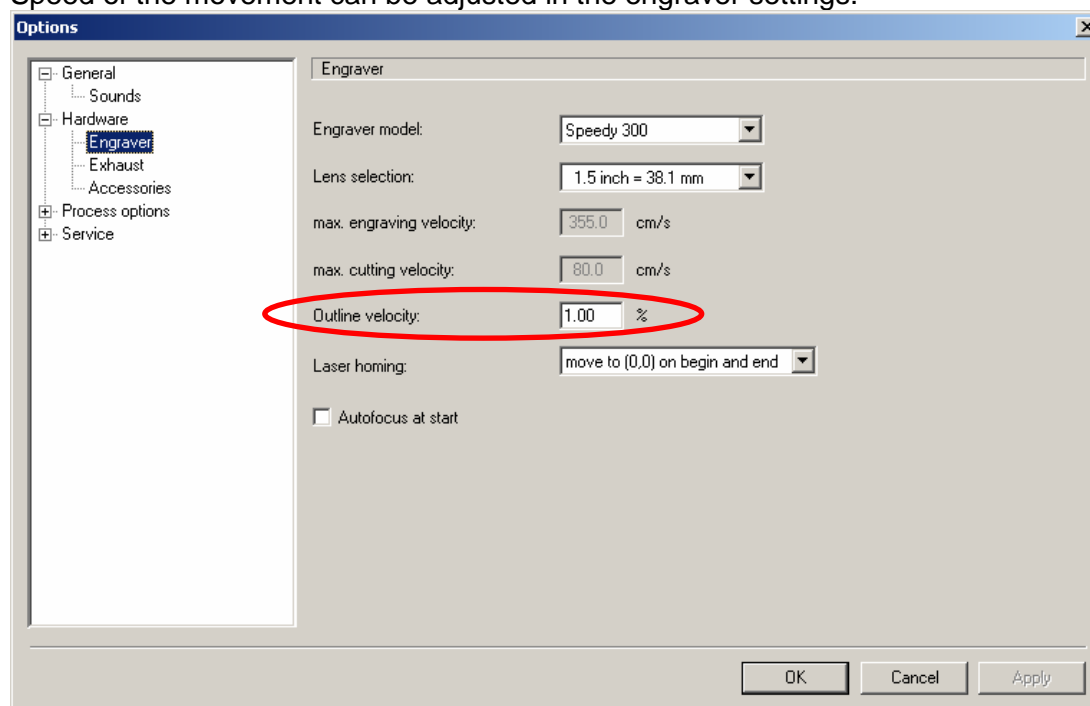
This movement is repeatedly done until the user activates the cancel button.

For safety reasons outlining is only possible with all covers closed.

Job Reset	Ctrl+R
Repeat Cut Line	
Outline job(s)	
Vector ordering	
Create MCO stamp	
Position Job Multiple...	
Duplicate Job	Ctrl+D
Rotate Job	
Remove Job	<--
Delete Job	Del
Export	
Properties	

Make sure there is enough clearance between head and material!

Speed of the movement can be adjusted in the engraver settings.



Outline example:





What else was new?

10 JobControl Release 9.0.1

10.1 Windows® Vista™ ready

JobControl (9.x) and driver (9.x) are capable to work with Microsofts new operating system Vista. Additionally it's possible to use those versions with Windows 2000 (SP4) and Windows XP (SP2). Administrative privileges are not longer required to operate JobControl.

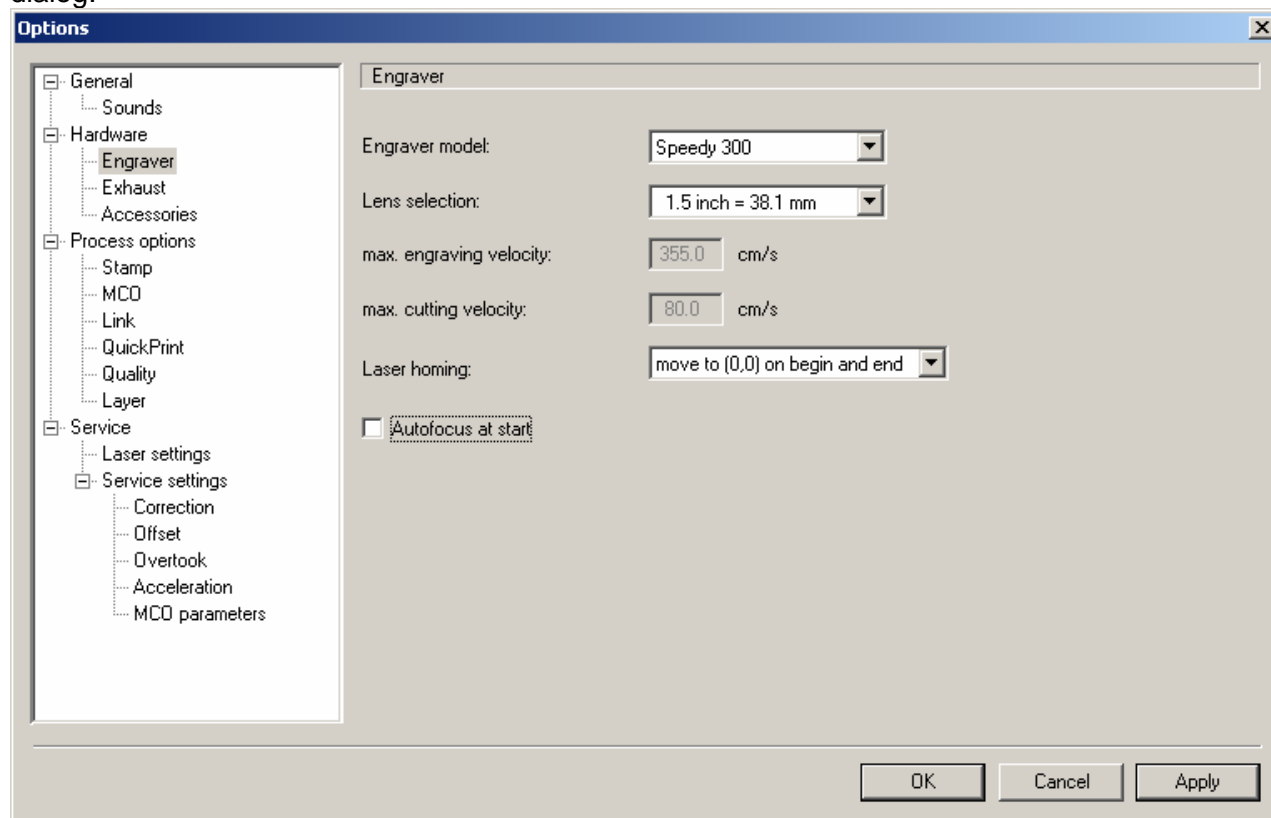
New file and folder configuration

File/Folder	JobControl 6 / 7	JobControl 9
Archive folder	C:\Program Files\Trotec\JobControl\Archive\	no longer used
Spool folder	C:\Program Files\Trotec\JobControl\Spool\	user configurable Windows 2000/XP: C:\Documents and Settings\All Users\Application Data\Trotec\JobControl\900\Spool\ Windows Vista: C:\Program Data\Trotec\JobControl\900\Spool\
Work folder	C:\Program Files\Trotec\JobControl\Work\	fixed Windows 2000/XP: C:\Documents and Settings\All Users\Application Data\Trotec\JobControl\900\Work\ Windows Vista: C:\Program Data\Trotec\JobControl\900\Work\
Manuals	C:\Program Files\Trotec\JobControl\	C:\Program Files\Trotec\JobControl\MNL\
Program data e.g. material and size settings, log files	C:\Program Files\Trotec\JobControl\	Windows 2000/XP: C:\Documents and Settings\All Users\Application Data\Trotec\JobControl\900\ Windows Vista: C:\Program Data\Trotec\JobControl\900\
Trotec7.ini	C:\Windows\	new name: "JC.INI" Windows 2000/XP: C:\Documents and Settings\All Users\Application Data\Trotec\JobControl\900\ Windows Vista: C:\Program Data\Trotec\JobControl\900\
Mco.dll Trotec.dll	C:\Program Files\Trotec\JobControl\	C:\Program Files\Trotec\Common Files\
TRMaterial.dll	C:\Windows\System32\	C:\Program Files\Trotec\Common Files\

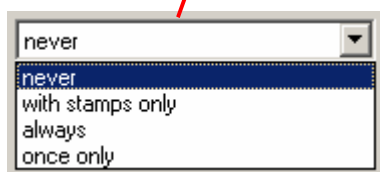
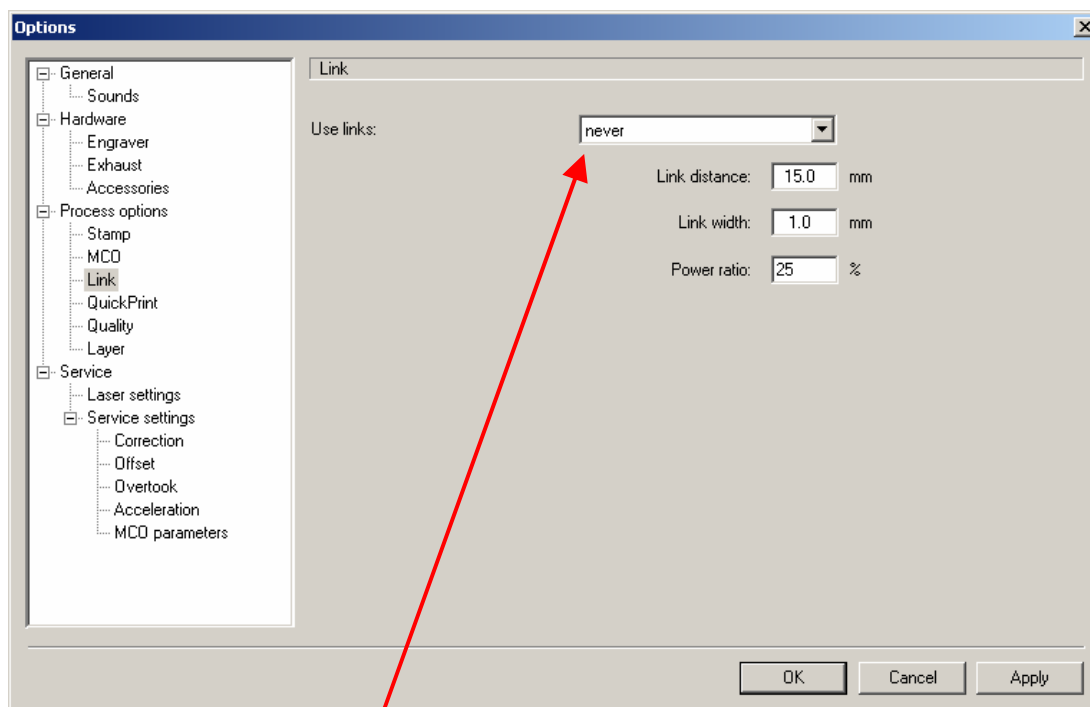


10.2 Newly-arranged Options dialog

Dialogs “Options”, “Advanced Options” and “Service Settings” have been combined to one single dialog:



10.3 Additional Link options



Link selection offers the following options:

- never – make no links
- with stamps only – links are just created when cutting stamps
- always – create links with all cut lines in all process kinds
- once only – one-shot occurrence when processing next plate

10.4 COM port autoselection

Ports 1 to 10 are scanned for appropriate Trotec equipment upon actuating the connect button.

